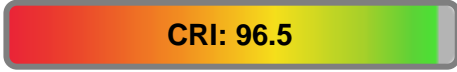




Light efficiency:



Light quality:



Color temperature:



Output: 1509 lm

Peak: 5371 cd

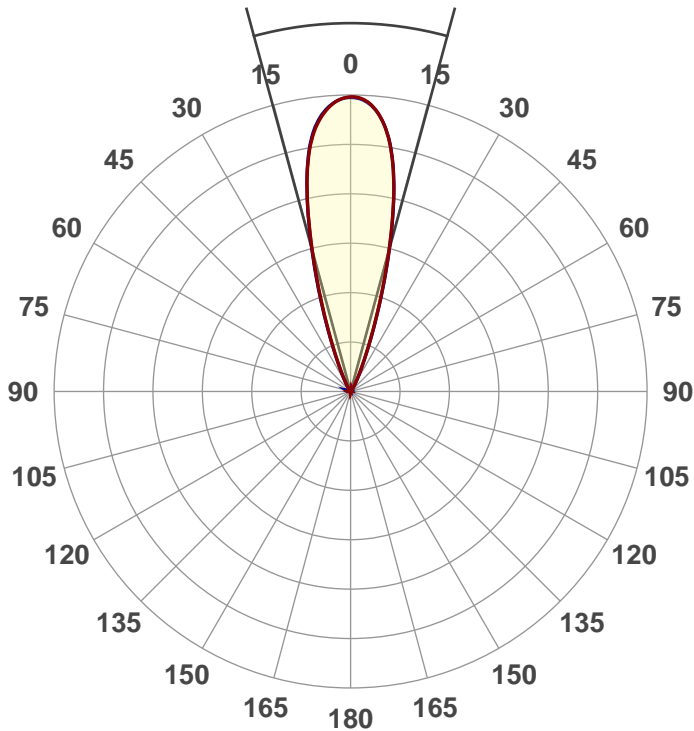
Power: 41.6 W

PF: 0.6



Beam angle

30.4°



Product name:

Encore FR50Z

Item number:

Zoom Out

Date:

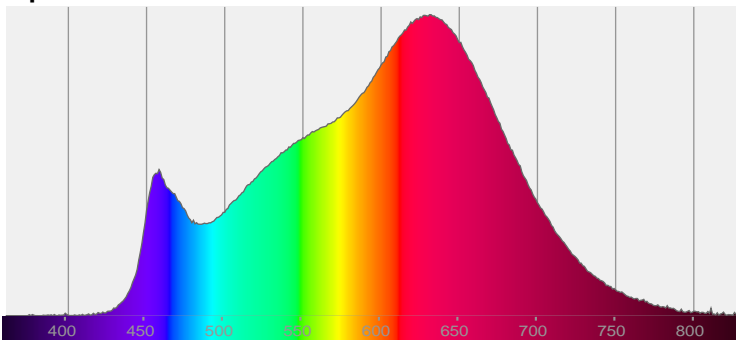
10/9/2017

Description:

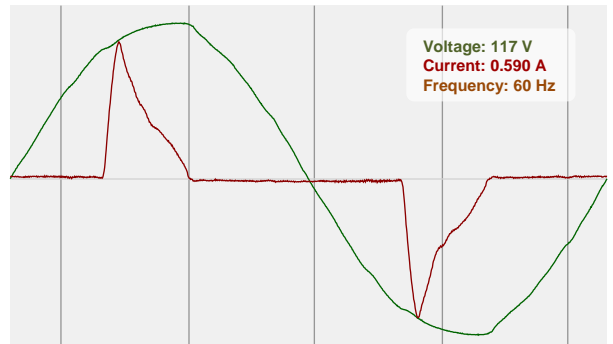


CIE 1931
x: 0.439
y: 0.400

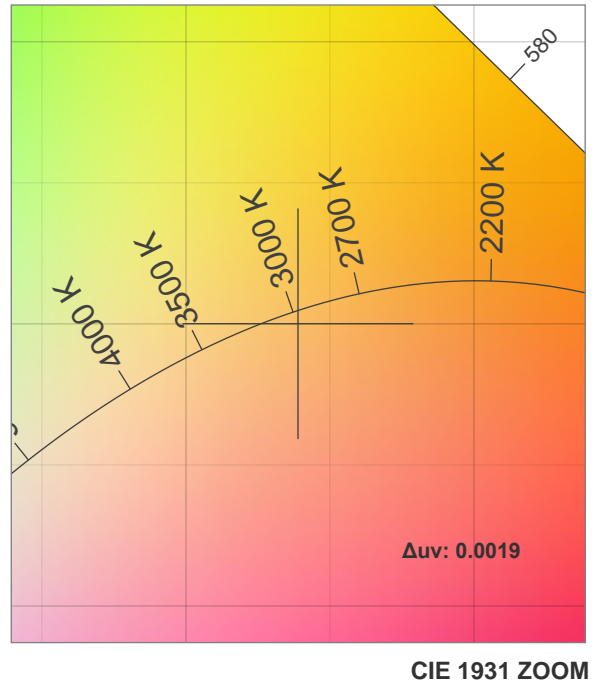
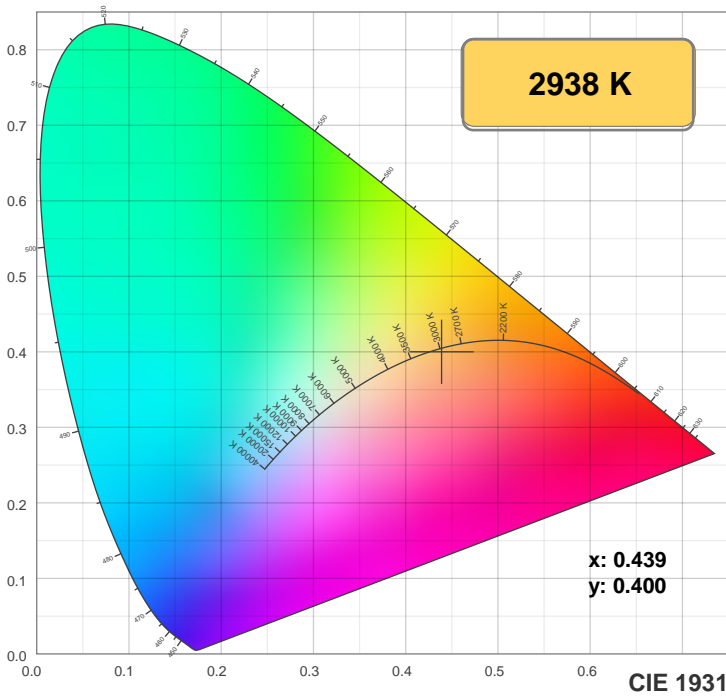
Spectra



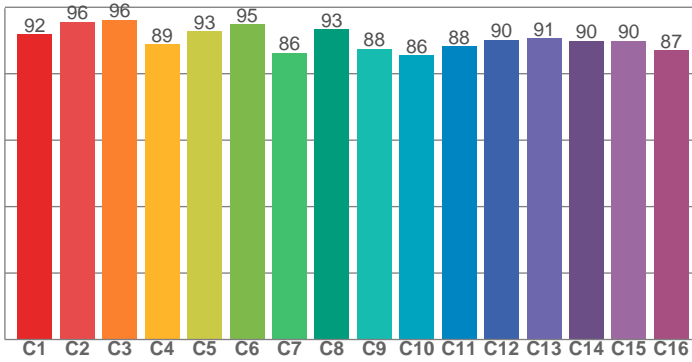
Power



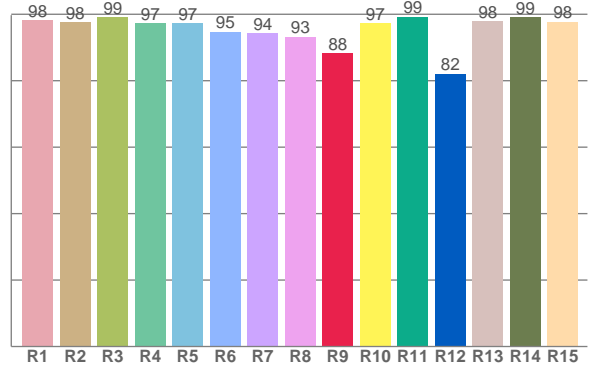
Color details



TM30: 90.6



CRI: 96.5 (R1-R8)



CRI R values, only R1-R8 are used to calculate final CRI value

R1	R2	R3	R4	R5	R6	R7	R8	R9	R10	R11	R12	R13	R14	R15
98.3	97.6	99.0	97.4	97.4	94.7	94.2	93.3	88.3	97.3	99.2	82.1	97.9	99.1	97.8

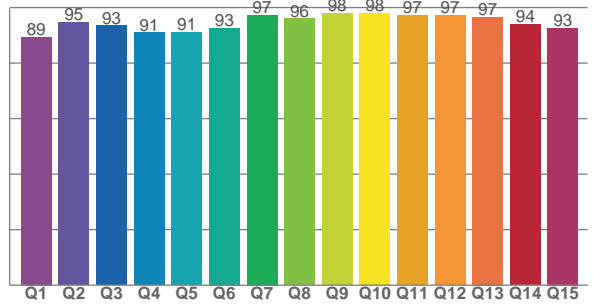
TM30 C values, 16 binned values out of total of 99 C values

C1	C2	C3	C4	C5	C6	C7	C8	C9	C10	C11	C12	C13	C14	C15	C16
91.8	95.5	96.2	88.9	92.7	94.8	86.2	93.4	87.5	85.5	88.2	90.2	90.7	89.9	89.9	87.0

CQS Q values

Q1	Q2	Q3	Q4	Q5	Q6	Q7	Q8	Q9	Q10	Q11	Q12	Q13	Q14	Q15
89.4	94.7	93.5	91.0	91.1	92.6	97.4	96.1	98.0	98.0	97.3	97.2	96.6	94.0	92.6

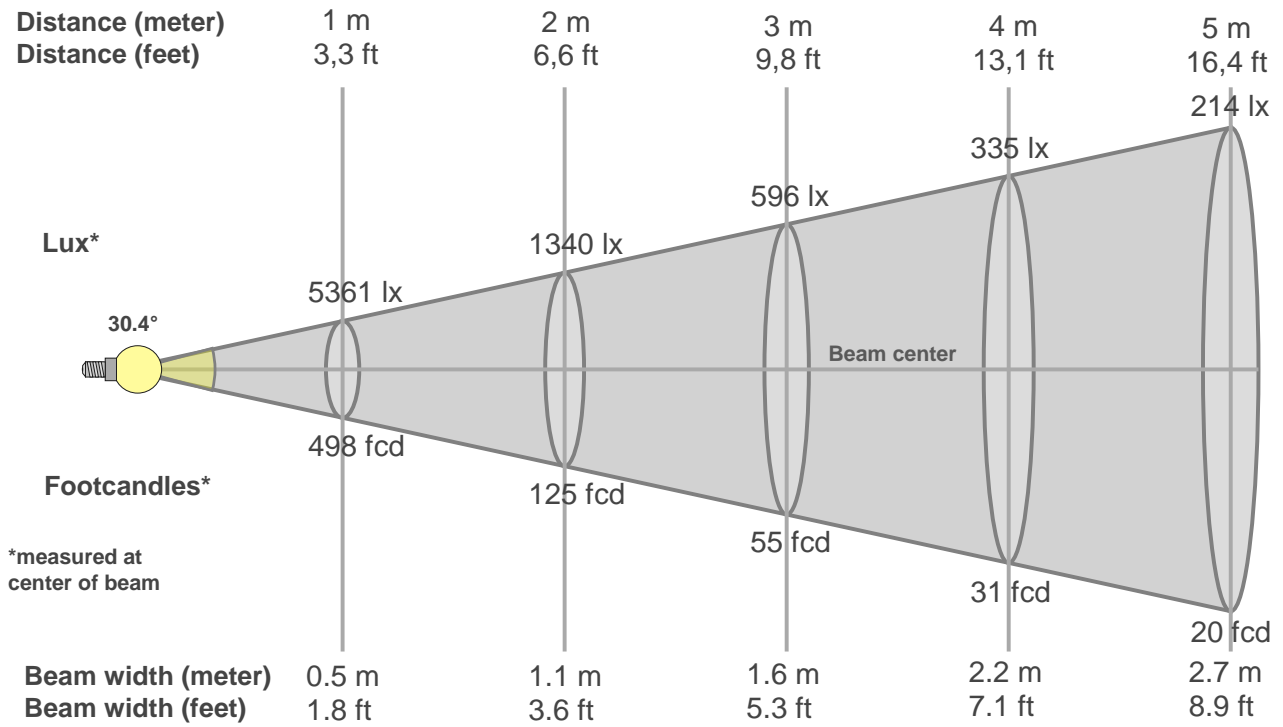
CQS: 93.7



Color parameters

Color temperature	Color rendering index	Red component	Color fidelity	Color gamut	Color quality scale	Color coordinate cie 1931	Color coordinate cie 1931	Color coordinate	Color coordinate	Color deviation from black body
CCT	CRI	CRI R9	TM30 Rf	TM30 Rg	CQS	x	y	u	v	Δuv
2938 K	96.5	88.3	90.6	98.2	93.7	0.439	0.400	0.254	0.347	0.0019

Beam details



Beam intensities from 1-20m

1m	2m	3m	4m	5m	6m	7m	8m	9m	10m	11m	12m	13m	14m	15m	16m	17m	18m	19m	20m
3.3ft	6.6ft	9.8ft	13.1ft	16.4ft	19.7ft	23ft	26.2ft	29.5ft	32.8ft	36.1ft	39.4ft	42.7ft	45.9ft	49.2ft	52.5ft	55.8ft	59.1ft	62.3ft	65.6ft
5361lx	1340lx	596lx	335lx	214lx	149lx	109lx	84lx	66lx	54lx	44lx	37lx	32lx	27lx	24lx	21lx	19lx	17lx	15lx	13lx
498.1fcd	124.5fcd	55.3fcd	31.1fcd	19.9fcd	13.8fcd	10.2fcd	7.8fcd	6.1fcd	5fcd	4.1fcd	3.5fcd	2.9fcd	2.5fcd	2.2fcd	1.9fcd	1.7fcd	1.5fcd	1.4fcd	1.2fcd

Intensities in 0° c-plane

0°	2°	4°	6°	8°	10°	12°	14°	16°	18°	20°	22°	24°	26°	28°	30°	32°	34°	36°	38°
5361	5325	5216	5037	4777	4373	3809	3114	2388	1725	1192	803	533	356	241	166	116	85	60	41
100%	99%	97%	94%	89%	82%	71%	58%	45%	32%	22%	15%	10%	7%	5%	3%	2%	2%	1%	1%

Intensities in 90° c-plane

0°	2°	4°	6°	8°	10°	12°	14°	16°	18°	20°	22°	24°	26°	28°	30°	32°	34°	36°	38°
5361	5323	5225	5060	4805	4397	3821	3130	2423	1768	1219	817	538	353	234	160	112	82	59	42
100%	99%	97%	94%	90%	82%	71%	58%	45%	33%	23%	15%	10%	7%	4%	3%	2%	2%	1%	1%

Intensities in 180° c-plane

0°	2°	4°	6°	8°	10°	12°	14°	16°	18°	20°	22°	24°	26°	28°	30°	32°	34°	36°	38°
5361	5345	5246	5050	4754	4334	3780	3101	2397	1747	1216	820	547	368	252	174	121	84	56	38
100%	100%	98%	94%	89%	81%	71%	58%	45%	33%	23%	15%	10%	7%	5%	3%	2%	2%	1%	1%

Intensities in 270° c-plane

0°	2°	4°	6°	8°	10°	12°	14°	16°	18°	20°	22°	24°	26°	28°	30°	32°	34°	36°	38°
5361	5331	5231	5044	4756	4342	3792	3125	2426	1778	1236	828	552	377	262	183	128	91	64	43
100%	99%	98%	94%	89%	81%	71%	58%	45%	33%	23%	15%	10%	7%	5%	3%	2%	2%	1%	1%

Beam angle 50%	Field angle 10%	Cutoff angle 2,5%	Intensity ratio in 120° cone	Intensity ratio in 90° cone
30.4°	48.1°	62.7°	98.9%	98.5%